

Outlook and Momentum tank drain and flush

We recommend that internal weekly cleaning instructions are followed before draining down and powering off machine – guidance can be found by clicking on links below.

[Machine user guides - Select KLIX® Momentum - User Guide](#)

[Drain and Flush Tutorial - YouTube Video](#)

Care must be taken when draining tank as it contains hot water and there is a risk of scalding.



Step 1



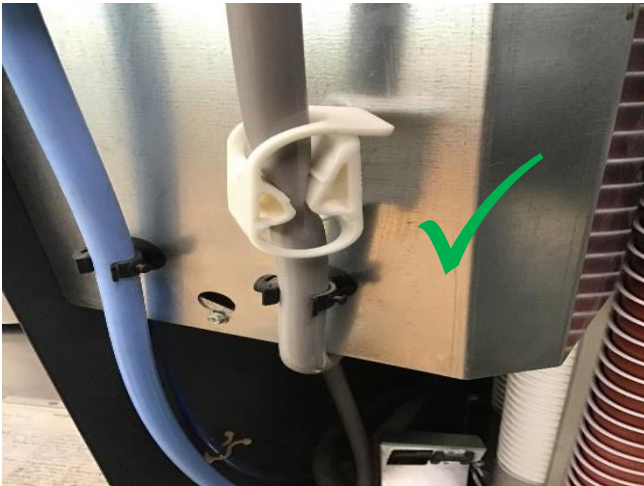
Step 1. Isolate power to machine by either switching off mains plug or removing internal plug which is located inside machine on the back- left hand side of carousel.

Turn off water supply by following blue pipe from back of machine to the stop valve and turn off water supply at mains.



Step 2. Locate the grey drain tube which will be attached to the metal tank guard, it will have a white plug on the end and a white clamp attached to it.

Step 3



Pic 1



Pic 2

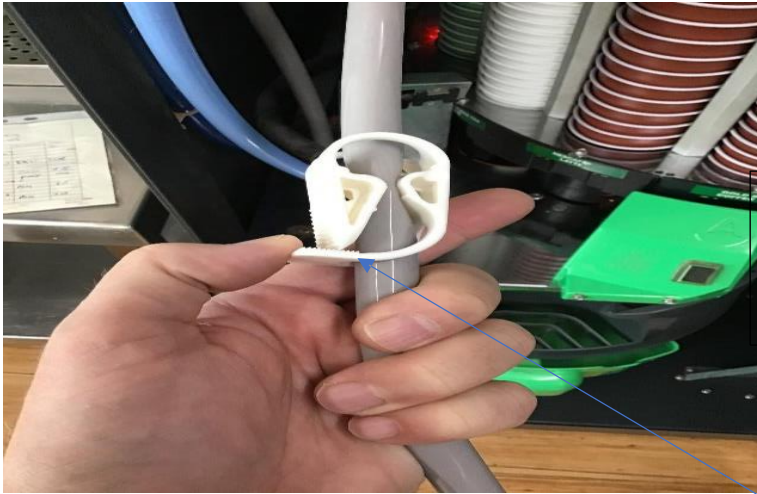
Before removing the drain tube please check that the clamp is in the closed position (pic 1) if not then push together until closed before removing drain plug.

Step 4



Remove drain plug from bottom of drain tube and place into cup holder of the drum making sure bucket is in place below.

Step 5

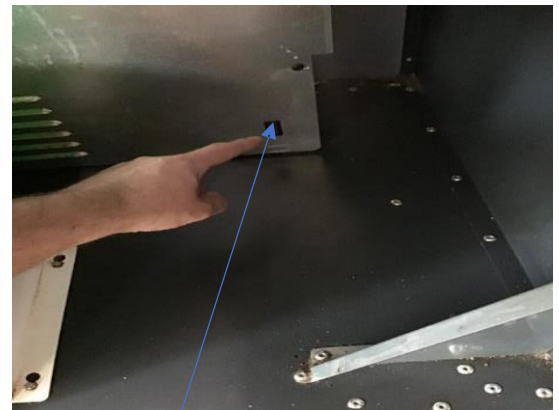


Care must be taken when draining tank as it contains hot water and there is a risk of scalding.

Open the clamp by pushing down on the bottom part of clip releasing the clamp to open as per pic.

Re – commission machine

- Reconnect water and power supply.
Turn machine on and make sure drum, drip tray and bucket are in place.
- Close the door and allow machine to fill and heat up the water tank, this will take approx. 15mins.
- Test vend 2 to 4 drinks to ensure machine is operational.



If machine has cold drink option: Flush cold water system, press flush button, right hand side of chiller for 30 seconds at a time for one full bucket.

Finally wipe down the front of your machine with anti-bacterial wipes making sure to include all selection buttons, coin insert and change cup.