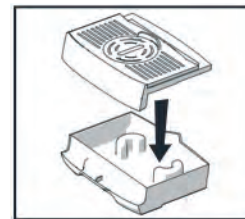
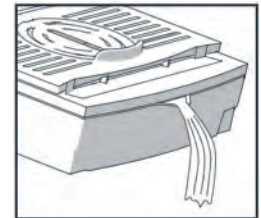
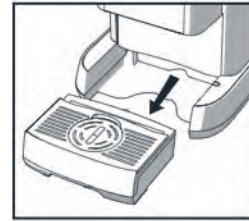


# Flavia Cleaning & Sanitising Instructions

## DAILY CARE

### EMPTYING THE DRIP TRAY

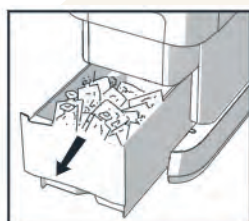
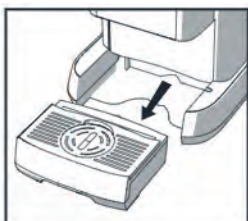
- ① Lift out and empty drip tray  
**Caution - contents may be hot**
- ② Separate top and bottom parts
- ③ Clean them in warm soapy water, wipe area left by drip tray
- ④ Reassemble and replace carefully



**NOTICE: The brewer does not tell you when the drip tray is full so make sure you check it regularly**

### EMPTYING THE FRESHPACK BIN

- ① Remove the drink tray as above
- ② Pull bin forwards
- ③ Empty the freshpack bin
- ④ Clean freshpack bin in warm, soapy water
- ⑤ Replace the freshpack bin
- ⑥ Replace drip tray



**LAVAZZA**  
PROFESSIONAL

# WEEKLY CARE

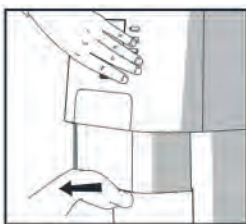
## GENERAL CLEANING

- 1 Use a clean damp cloth to wipe the outside surfaces and the areas that are exposed inside

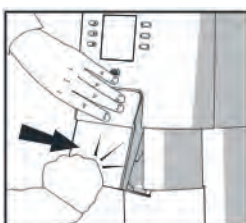
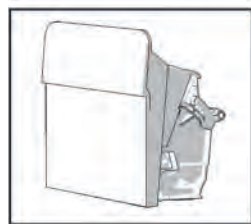
**NOTICE: Do not use strong detergents and take care not to get soapy water into the water tank as this will affect the drink taste.**

## CLEANING THE FRESHPACK DOOR

- 1 Grip bottom of freshpack door
- 2 Use other hand to steady the brewer
- 3 Pull the bottom of the freshpack door sharply towards you (*Ref. G*)
- 4 Wash in warm soapy water and rinse thoroughly
- 5 Wipe sides of area where door was
- 6 Replace door - top first
- 7 Push bottom of door until you hear a '**CLICK**' (*Ref. H*)



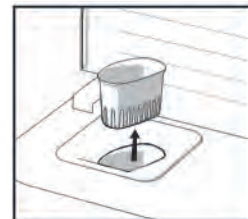
(Ref. G)



(Ref. H)

## CLEANING THE WATER FILLER FUNNEL

- 1 Open filler lid
- 2 Remove water filler strainer
- 3 Clean in warm soapy water
- 4 Rinse thoroughly (so no soap goes into tank)
- 5 Replace the water filler strainer
- 6 Close the filler flap



## CLEANING THE CUP DETECT & AIR DUCT

- 1 Clean cup sensor to ensure correct operation
- 2 Ensure air duct is clean and free of debris

**NOTICE: Remove freshpack door to access air duct. After cleaning, sanitise surfaces with a non-chlorine based anti-bacterial wipe or solution. Avoid scented products, as this will affect the drink taste.**

